



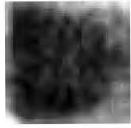
An agency of the Government of Ontario



Un organisme du gouvernement de l'Ontario

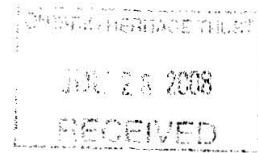
This document was retrieved from the Ontario Heritage Act Register, which is accessible through the website of the Ontario Heritage Trust at **www.heritagetrust.on.ca**.

Ce document est tiré du registre aux fins de la *Loi sur le patrimoine de l'Ontario*, accessible à partir du site Web de la Fiducie du patrimoine ontarien sur **www.heritagetrust.on.ca**.



300 Dufferin Avenue
P.O. Box 5035
London, ON
N6A 4L9

London
CANADA



NOTICE OF ADOPTION OF BY-LAW NO. L.S.P.-3400-254
(Under the Ontario Heritage Act, R.S.O. 1990, c. 0,18)

TAKE NOTICE that on July 21, 2008, London City Council adopted By-law No. L.S.P.-3400-254, which designates the area of West Woodfield as a Heritage Conservation District under Part V of the Ontario Heritage Act and adopting the West Woodfield Heritage Conservation District Plan as the Heritage Conservation District Master Plan.

AND TAKE NOTICE that any person or public body may appeal to the Ontario Municipal Board (OMB) in respect of the by-law by filing a notice of appeal with the Clerk of The Corporation of the City of London **NO LATER THAN 4:30 p.m. ON THE 2nd day of September, 2008**. The Office of the City Clerk is located in Room 308, 3rd floor, City Hall, 300 Dufferin Avenue. If you wish to appeal to the OMB, a copy of an appeal form is available from the OMB website at www.omb.gov.on.ca. The notice of appeal must set out the objection to the By-law and the reasons in support of the objection, and must be accompanied by the \$125.00 fee prescribed under the *Ontario Municipal Board Act*, in the form of a certified cheque or money order payable to the Minister of Finance.

A brief description of the characteristics of the Heritage District and a key map of the area that the by-law applies are printed on the reverse side of this notice. A copy of the Heritage Conservation District Master Plan can be viewed on the City of London website www.london.ca

For further information about this by-law, please contact Don Menard, Heritage Planner, Planning Division at 519-661-2500 ext. 0267 or dmenard@london.ca.

The complete by-law is available from the City Clerk's Office, 3rd floor, City Hall or by telephoning 519-661-2500 ext. 0916 during business hours (weekdays from 8:30 a.m. to 4:30 p.m.).

Dated at the City of London this 2nd day of August, 2008.

Heritage Character of West Woodfield

The Heritage character of West Woodfield was shaped by two factors, the reservation of an area by the Crown in 1838 for use by the British military and the incorporation of the Woodfield area extending to Adelaide Street in to the City of London in 1840. Much of the early development was composed of one-storey wooden houses, many of which were later replaced with large brick dwellings between the late 1880's and 1914. As the City's economy developed many of the business and political leaders were residents in the Woodfield area.

Following the creation of Victoria Park in 1874 the streets surrounding it began to attract some of the city's wealthiest citizens. The nature of the subsequent residential development along with earlier trends further to the east, contributed to the development of important institutional buildings including churches and schools which are still very prominent today.

In the period 1920-1970 two other trends shaped the character of West Woodfield – the conversion of large homes to multiple family dwellings, offices and institutional uses and the replacement of single family homes with apartment buildings and institutional structures.

